

# TRUCK CRANE

TL 200 M-3

## TOTAL RATED LOADS

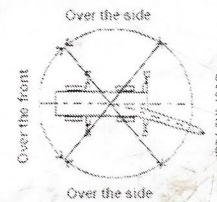
(1) Unit : ton

<ul style="list-style-type: none"> <li>• Outriggers fully extended + front jack (360°)</li> <li>• Outriggers fully extended (Over rear – Over sides)</li> </ul>							
A B(m)	9.8m	13.3m	16.9m	20.4m	23.9m	27.5m	31m
3.0	20.00	17.50	14.50	9.50			
3.5	20.00	17.50	14.50	9.50			
4.0	18.00	17.50	14.50	9.50	7.50	6.50	
4.5	16.30	15.80	14.50	9.50	7.50	6.50	
5.0	14.85	14.40	13.25	9.50	7.50	6.50	6.00
5.5	13.65	13.25	12.20	9.50	7.50	6.50	6.00
6.0	12.30	12.20	11.30	9.50	7.50	6.50	6.00
6.5	11.20	11.00	10.50	9.50	7.50	6.50	6.00
7.0	10.25	10.00	9.80	8.85	7.50	6.50	6.00
7.5	9.40	9.20	9.10	8.35	7.50	6.50	6.00
8.0	8.65	8.45	8.35	7.90	7.20	6.25	5.70
9.0		7.05	7.10	7.00	6.65	5.75	5.20
10.0		6.05	5.90	6.35	6.20	5.30	4.75
12.0			4.05	4.45	4.65	4.50	4.00
14.0			2.90	3.25	3.45	3.55	3.50
16.0				2.40	2.60	2.75	2.85
18.0				1.75	2.00	2.10	2.20
20.0					1.50	1.65	1.75
22.0					1.05	1.25	1.35
24.0						0.90	1.05
26.0							0.75
28.0							0.55
29.4							0.40

A = Boom length

B = Working radius

- |                 |  |
|-----------------|--|
| 360°:           | Outriggers fully extended (6.1m) + Front jack  |
| Over the sides: | Outriggers fully extended (6.1m)               |
| Over the rear:  | Outriggers fully extended (6.1m)               |
|                 | Outriggers middle extended (4.0m)              |
|                 | Outriggers minimum extended (2.08m)            |
| Over the front: | Outriggers fully extended (6.1m) + Front jack  |
|                 | Outriggers middle extended (4.0m) + Front jack |



**NOTES:**

1. The total rated loads shown are for the case when the outriggers are set horizontally on firm ground. The values are based on the crane strength.
2. Total rated loads below bold lines do not exceed 75% of tipping load.
3. The weights of the slings and hooks (main winch hook: 230 kg, auxiliary winch hook: 60kg) are included in the total rated loads shown.
4. The total rated load is based on the actual working radius including the deflection of the boom.
5. The chart below shows the standard number of part lines for each boom length. The load per line should not exceed 2.9t for the main winch and 3.0t for the auxiliary winch.

<b>A</b>	<b>9.8m</b>	<b>13.3m</b>	<b>16.9m</b>	<b>20.4m</b>	<b>23.9m</b>	<b>27.5m</b>	<b>31m</b>	<b>J</b>
<b>H</b>	<b>7</b>	<b>7</b>	<b>7</b>	<b>4</b>	<b>4</b>	<b>4</b>	<b>4</b>	<b>1</b>

A = Boom length      H = No. of part lines      J = Jib / single top

6. As a rule, free-fall operation should be performed only when lowering the hook alone. If a hoisted load must be lowered by free-fall operation, the load must be kept below 1/5<sup>th</sup> of the total rated load (the load per line must be 0.6t or less) and sudden braking operations must be avoided.
7. The total rated loads for the single top are obtained by subtracting the corresponding values below from the total rated load of the boom and must not exceed 3.0t.

<b>A</b>	<b>9.8m</b>	<b>13.3m</b>	<b>16.9m</b>	<b>20.4m</b>	<b>23.9m</b>	<b>27.5m</b>	<b>31m</b>
<b>Q</b>	<b>0kg</b>	<b>50kg</b>	<b>50kg</b>	<b>150kg</b>	<b>150kg</b>	<b>200kg</b>	<b>200kg</b>

A = Boom length      Q = Subtracted load

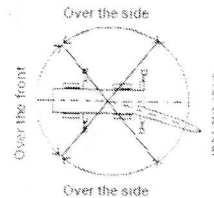
8. Weather conditions (see operators manual).

**TOTAL RATED LOADS**  
(1a) Unit: ton

OUTRIGGERS MIDDLE EXTENDED (360°)				
OUTRIGGERS FULLY EXTENDED (OVER THE FRONT)				
31.0m boom + 8.0m jib				
		5°		30°
E (°)	B (m)	M	B (m)	M
80	7.8	2.75	10.5	1.35
75	11.2	2.75	13.7	1.35
70	14.6	2.30	16.8	1.30
65	17.6	2.00	19.8	1.25
60	20.5	1.60	22.5	1.20
55	23.3	1.25	25.0	1.00
50	25.7	0.90	27.4	0.80
45	27.9	0.60	29.4	0.60
40	29.9	0.40	31.1	0.40
35	31.8	0.25	32.7	0.25

C = Jib length D = Jib offset E = Boom angle

- 360°: Outriggers fully extended (6.1m) + Front jack
- Over the sides: Outriggers fully extended (6.1m)
- Over the rear: Outriggers fully extended (6.1m)
- Outriggers middle extended (4.0m)
- Outriggers minimum extended (2.08m)
- Over the front: Outriggers fully extended (6.1m) + Front jack
- Outriggers middle extended (4.0m) + Front jack



**NOTES:**

6. The total rated loads shown are for the case when the outriggers are set horizontally on firm ground. The values are based on the crane strength.
7. Total rated loads below bold lines do not exceed 75% of tipping load.
8. The weights of the slings and hooks (main winch hook: 230 kg, auxiliary winch hook: 60kg) are included in the total rated loads shown.
9. The total rated load is based on the actual working radius including the deflection of the boom.
10. The chart below shows the standard number of part lines for each boom length. The load per line should not exceed 2.9t for the main winch and 3.0t for the auxiliary winch.

A	9.8m	13.3m	16.9m	20.4m	23.9m	27.5m	31m	J
H	7	7	7	4	4	4	4	1

A = Boom length H = No. of part lines J = Jib / single top

6. As a rule, free-fall operation should be performed only when lowering the hook alone. If a hoisted load must be lowered by free-fall operation, the load must be kept below 1/5<sup>th</sup> of the total rated load (the load per line must be 0.6t or less) and sudden braking operations must be avoided.
7. The total rated loads for the single top are obtained by subtracting the corresponding values below from the total rated load of the boom and must not exceed 3.0t.

A	9.8m	13.3m	16.9m	20.4m	23.9m	27.5m	31.0m
Q	0kg	50kg	50kg	150kg	150kg	200kg	200kg

A = Boom length Q = Subtracted load

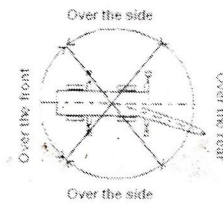
8. Weather conditions (see operators manual).

### TOTAL RATED LOADS (2) Unit : ton

<ul style="list-style-type: none"> <li>• Outriggers middle extended (360°)</li> <li>• Outriggers fully extended (Over front)</li> </ul>							
A B(m)	9.8m	13.3m	16.9m	20.4m	23.9m	27.5m	31.0m
3.0	20.00	17.50	14.50	9.50			
3.5	17.80	17.50	14.50	9.50			
4.0	15.70	15.40	14.50	9.50	7.50	6.50	
4.5	13.70	13.35	13.15	9.50	7.50	6.50	
5.0	10.50	10.25	10.05	9.50	7.50	6.50	6.00
6.0	6.85	6.65	6.50	7.00	7.30	6.50	6.00
7.0	4.85	4.65	4.50	4.95	5.25	5.40	5.55
8.0	3.55	3.40	3.25	3.70	3.90	4.10	4.20
9.0		2.50	2.40	2.80	3.00	3.15	3.30
10.0		1.85	1.75	1.20	2.35	2.50	2.60
12.0			0.90	1.20	1.40	1.55	1.65
14.0				0.60	0.80	0.95	1.05
15.0					0.60	0.70	0.80

A = Boom length      B = Working radius

- 360°:                      Outriggers fully extended (6.1m) + Front jack  
 Over the sides:        Outriggers fully extended (6.1m)  
 Over the rear:         Outriggers fully extended (6.1m)  
                               Outriggers middle extended (4.0m)  
                               Outriggers minimum extended (2.08m)  
 Over the front:        Outriggers fully extended (6.1m) + Front jack  
                               Outriggers middle extended (4.0m) + Front jack



**NOTES:**

- The total rated loads shown are for the case when the outriggers are set horizontally on firm ground. The values are based on the crane strength.
- Total rated loads below bold lines do not exceed 75% of tipping load.
- The weights of the slings and hooks (main winch hook: 230 kg, auxiliary winch hook: 60kg) are included in the total rated loads shown.
- The total rated load is based on the actual working radius including the deflection of the boom.
- The chart below shows the standard number of part lines for each boom length. The load per line should not exceed 2.9t for the main winch and 3.0t for the auxiliary winch.

A	9.8m	13.3m	16.9m	20.4m	23.9m	27.5m	31m	J
H	7	7	7	4	4	4	4	1

A = Boom length      H = No. of part lines      J = Jib / single top

- As a rule, free-fall operation should be performed only when lowering the hook alone. If a hoisted load must be lowered by free-fall operation, the load must be kept below 1/5<sup>th</sup> of the total rated load (the load per line must be 0.6t or less) and sudden braking operations must be avoided.
- The total rated loads for the single top are obtained by subtracting the corresponding values below from the total rated load of the boom and must not exceed 3.0t.

A	9.8m	13.3m	16.9m	20.4m	23.9m	27.5m	31.0m
Q	0kg	50kg	50kg	150kg	150kg	200kg	200kg

A = Boom length      Q = Subtracted load

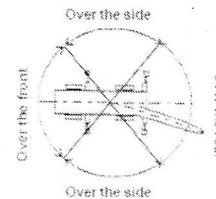
- Weather conditions (see operators manual).

## TOTAL RATED LOADS (2a) Unit: ton

E (°)	31.0 m boom = 8.0m Jib			
	5°		30°	
	B (m)	M	B (m)	M
80	7.8	2.75	10.5	1.35
77	9.7	2.75	12.4	1.35
75	11.0	2.25	13.7	1.35
70	14.0	1.25	16.7	1.00
65	16.9	0.60	19.4	0.50

**C = Jib length    D = Jib offset    E = Boom angle**

- |                 |  |
|-----------------|--|
| 360°:           | Outriggers fully extended (6.1m) + Front jack  |
| Over the sides: | Outriggers fully extended (6.1m)               |
| Over the rear:  | Outriggers fully extended (6.1m)               |
|                 | Outriggers middle extended (4.0m)              |
|                 | Outriggers minimum extended (2.08m)            |
| Over the front: | Outriggers fully extended (6.1m) + Front jack  |
|                 | Outriggers middle extended (4.0m) + Front jack |



**NOTES:**

16. The total rated loads shown are for the case when the outriggers are set horizontally on firm ground. The values are based on the crane strength.
17. Total rated loads below bold lines do not exceed 75% of tipping load.
18. The weights of the slings and hooks (main winch hook: 230 kg, auxiliary winch hook: 60kg) are included in the total rated loads shown.
19. The total rated load is based on the actual working radius including the deflection of the boom.
20. The chart below shows the standard number of part lines for each boom length. The load per line should not exceed 2.9t for the main winch and 3.0t for the auxiliary winch.

<b>A</b>	<b>9.8m</b>	<b>13.3m</b>	<b>16.9m</b>	<b>20.4m</b>	<b>23.9m</b>	<b>27.5m</b>	<b>31m</b>	<b>J</b>
<b>H</b>	<b>7</b>	<b>7</b>	<b>7</b>	<b>4</b>	<b>4</b>	<b>4</b>	<b>4</b>	<b>1</b>

A = Boom length      H = No. of part lines      J = Jib / single top

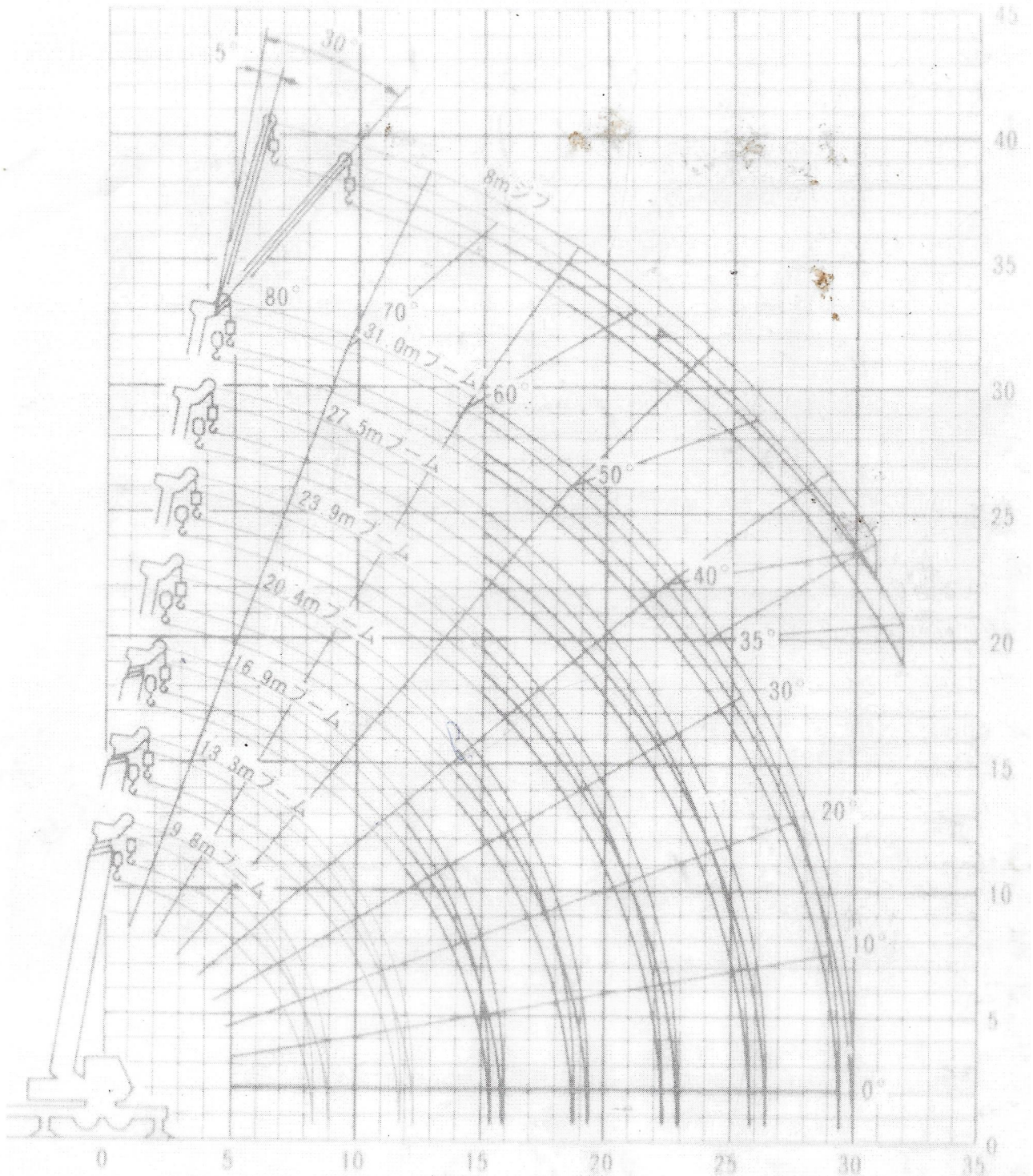
6. As a rule, free-fall operation should be performed only when lowering the hook alone. If a hoisted load must be lowered by free-fall operation, the load must be kept below 1/5<sup>th</sup> of the total rated load (the load per line must be 0.6t or less) and sudden braking operations must be avoided.
7. The total rated loads for the single top are obtained by subtracting the corresponding values below from the total rated load of the boom and must not exceed 3.0t.

<b>A</b>	<b>9.8m</b>	<b>13.3m</b>	<b>16.9m</b>	<b>20.4m</b>	<b>23.9m</b>	<b>27.5m</b>	<b>31.0m</b>
<b>Q</b>	<b>0kg</b>	<b>50kg</b>	<b>50kg</b>	<b>150kg</b>	<b>150kg</b>	<b>200kg</b>	<b>200kg</b>

A = Boom length      Q = Subtracted load

8. Weather conditions (see operators manual).

### WORKING RADIUS – LIFTING HEIGHT



**NOTES:**

1. The deflection of the boom is not incorporated in the figure above.
2. The above chart is for the case where the outriggers are fully extended and where the front jack are used (over 360°)